

HAY WIRE ROGAINE

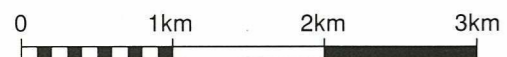
WARA 12 HOUR ROGAINE

Easter Saturday, 11th April 1998



LEGEND

SCALE 1:50,000, 5 metre contour interval



- Building
- Control
- Contours
- Dam
- Forest Boundary
- Hash House
- Magnetic North Line
- Out of Bounds
- Bitumen Road
- Major Gravel Road
- Track
- Watercourse
- Water Drop

SETTERS AND VETTERS

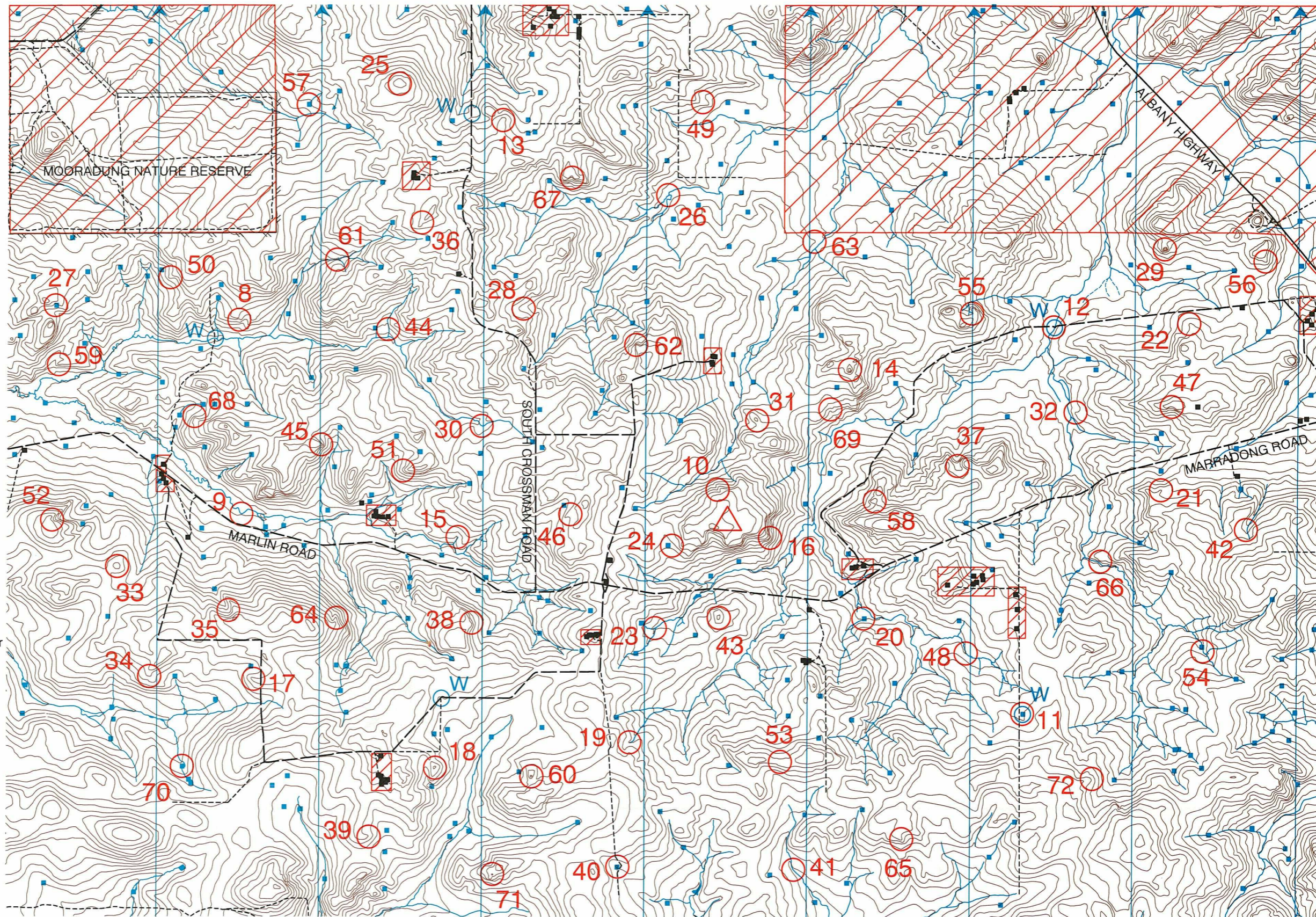
- Peter Watson Craig Dermer
- Gary Carroll Mal Dennett

SPECIAL THANKS TO THE FARMERS

- Murray Atkinson
- Gary and Kay Batt (Westover)
- Walter Browne (Brownlea)
- Ray, Margaret and Ashley Chadwick
- Dorothy, Charles, Beryl, John & Peter Cowcher
- Robin and Alec Edgar (Yarandoo)
- Kim and Kayleen Gronow (TKK/Kievi)
- Dave and Jo Laurie (Snaigow)
- Bill and Jenny Stevens (Marlin)
- Ashley and Pier Stone (Ellerslie)

Possession of this map does not give right of entry to this area.

This map was produced using OCAD. Data supplied by DOLA and used under copy licence 393/93



HAYWIRE 12 Hour Rogaine. Easter Saturday, 11th April 1998

No.	Description	Points	No.	Description	Points	Important information	
8	An 8m Cliff, Foot of	20	43	The Knoll	60	Control Cards From 0930 Sat.	
9	The Watercourse Bend	20	44	The Watercourse	60		
10	The Gully	20	45	The Spur	60		
11	The Dam, South West Side, on a Windmill	20	46	The Spur	60		
12	A Bridge, West Side	20	47	The Gully, Head of	60		Briefing 0945 Sat.
			48	A 4m cliff, Foot of	60		
13	The Spur	30	49	The Spur	70		Start 1000 Sat.
14	The Rocky Knoll	30	50	The Spur, on a Knoll	70		
15	A Watercourse Junction	30	51	The Spur	70		
16	The Spur	30	52	The Gully, Head of	70		Finish 2200 Sat.
17	The Spur	30	53	The Broad Saddle	70		
18	The Knoll	30	54	A Soak, South Side, 50m South of the Dam	70		
19	The Watercourse, Head of	30				Hash House Opens 1600 Sat. Closed About Midnight Re-opens 0700 Sun.	
20	The Dam, North West Corner	30	55	The Watercourse, Head of	80		
21	The Spur	30	56	The Spur	80		
22	The Spur	30	57	The Dam, North East Corner	80		
23	The Watercourse Junction	30	58	The Knoll, Rocky	80		
24	A 4m Boulder, West Side	30	59	The Spur	80	Fruit Drops None. Just Water Drops	
			60	The Knoll	80		
25	The Knoll	40	61	The Watercourse Junction	90		
26	The Watercourse Junction	40	62	The Spur, Bottom of a Breakaway	90		
27	The Dam, West Side	40	63	The Spur	90	Sunset 1757 Sat.	
28	The Broad Gully	40	64	The Spur	90		
29	The Knoll	40	65	The Spur, Rocky	90		
30	The Watercourse Bend	40	66	A 6m cliff, Foot of	90		
31	The Knoll	40				Moonrise 1749 Sat.	
32	The Spur	40	67	The Gully	100		
33	The Broad Knoll	40	68	The Spur, Bottom of	100		
34	The Broad Spur, in Native Bush	40	69	The Gully	100		
35	The Gully	40	70	The Dam, West Side, in Trees	100		
36	The Spur	40	71	The Knoll, Very Rocky	100	Controls Used 65	
			72	The Spur	100		
37	The Gully	50					
38	A Breakaway, On Top of	50	Water	South West of #8 - The track and creek intersection		Total Points 3640	
39	The Spur	50	Water	At #11 - A Dam, South West Side			
40	The Dam, North West Side	50	Water	At #12 - A Bridge, West Side			
41	The Watercourse Bend	50	Water	West of #13 - A fence intersection			
42	The Watercourse bend	50	Water	North of #18 - The track Intersection			